



GTCONSULT

enabling productivity

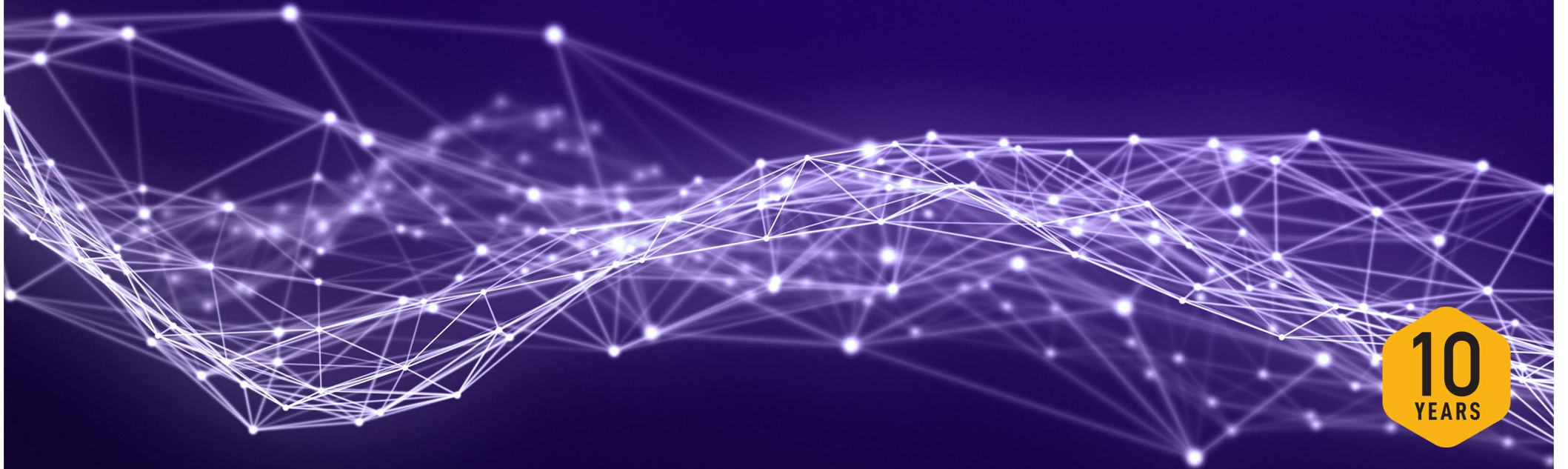


Table of Contents

About Us **3**




Development **5**



- › Intranets & Landing Pages
- › Business Automation
- › Info Mailers
- › SharePoint Workbench
- › Attend
- › Digital Forms
- › Agility
- › Aspire
- › Leave Management
- › Joiners and Leavers
- › IT Asset Management
- › Travel Request Solution
- › Expense Claim
- › Capital Expenditure

Support **8**



- › Migrations
- › Helpdesk & Support
- › Maintenance
- › Configuration and roll out
- › Upgrades
- › Audits
- › New Installations

Protection **10**



- › External Vulnerability Assessment
- › Internal Vulnerability Assessment
- › Penetration testing
- › Office 365 Security Assessment
- › Long-term Security Strategies
- › MFA Configuration
- › Mobile Device Management
- › Microsoft InTune Configuration and Roll Out

A Team Agreements **13**



Contact Us **14**



About Us

Microsoft
Partner



Gold Security
Gold Cloud Productivity
Gold Collaboration and Content
Gold Datacenter
Gold Messaging

Gold
Microsoft Partner



GTconsult is a cutting edge consultancy that is technologically driven and provides bespoke productivity solutions that leverage Microsoft out of the box collaboration software.

Founded in South Africa, **GTconsult** has grown globally with offices in London, UK and Seattle, USA. These strategic locations allow the company to offer its world-class services to a global market, leveraging the South African workforce.

GTconsult is fast establishing itself as the consultancy of choice that focuses on clients' feedback and desires to improve their businesses.

GTconsult began as the brainchild of Bradley Geldenhuys and Craig Tarr who are still key stakeholders in the company and are accomplished technological experts in their own right. Having established a name in the industry through dedication to the core belief that technology could be implemented more effectively, the modest company has grown into the proud business that it is today.

The UK office is being headed up by Aaron Blair who has been in the IT industry for over 15 years and has provided services and solutions across most industry verticals. His passion and experience for the IT industry makes him an indispensable member of our team.

Our team of certified Microsoft consultants, architects, designers, and infrastructure and cloud experts cover all your Microsoft Collaboration needs. We live by our motto, Enabling Productivity.

Further, we are Microsoft Gold partners for Cloud Productivity, Collaboration and Content and Security. We are recognized as a key Microsoft business partner and we are consistently finalists in the Microsoft Partner Awards.

GTconsult is an Award winning and Microsoft Partner of the year nominated Gold Partner, who has achieved partnership credentials in SharePoint Deployment Planning Services (SDPS), and is an active member of the prestigious Business Critical SharePoint Program (BCSP).

We focus on three key areas:



Our experience in sectors is broad and focuses on industries such as financial, telecommunications, fashion, industrial and media. We never compromise on service excellence and our business acumen and strategic planning capabilities are bolstered by a number of our key staff members holding MBA's from respected tertiary educational institutions.

GTconsult prides itself on giving back to the community. Many of our team at GT are regular speakers at SharePoint Saturdays and Information Worker community events.

Companies can benefit from our knowledge and understanding of IT, not only because of our experience and certifications on the subject but because of our passion and dedication. We are great at what we do, and we undertake every project with the passion we have for technology. Central to our service offering is showcasing credibility across all client touchpoints and then closing with professionalism that gives clients the peace of mind that their every need has been taken care of. We have grown faster than any of our competitors because we are geeks that are passionate about technology and love what we do.

GTconsult provides outsourced managed services by nurturing and growing talent in niche IT technologies for businesses around the world.

A Team DEVELOPMENT

 gtconsult.com/development

Development

Custom workflows, intranets, business solutions and line-of-business integrations with Microsoft SharePoint, Microsoft Office 365 and Microsoft Azure.

All your development needs.

We have handpicked the members of our A Team so you can rest assured knowing that you will only receive the highest quality of work.

Leverage the A Team.

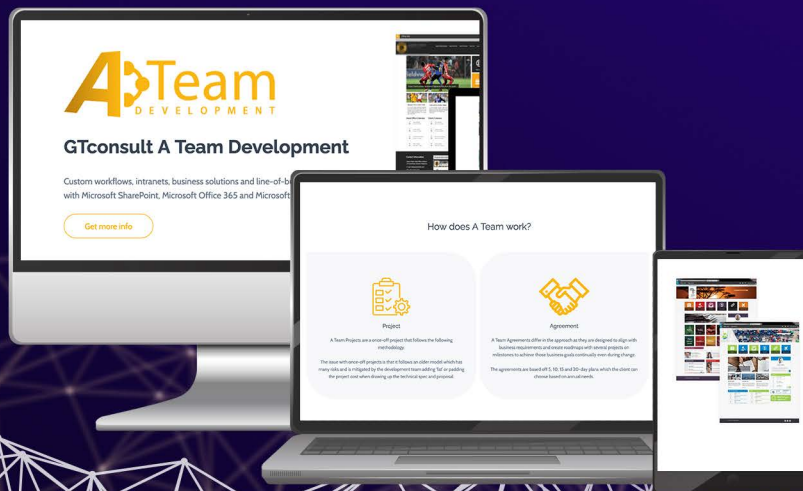
You will have some of the best engineers, designers, developers and testers in the world working to enable productivity in your business.

Regular updates.

You will have a dedicated project manager to give your regular updates on the progress of your project and give you real-time updates.

Ongoing development.

Our A Team is constantly learning and upskilling themselves and are on the cutting edge of any new development and tech out there.



➤ **Intranets & Landing Pages.**

Our responsive & customized intranets and landing pages are designed using templates which are easy to edit and deploy saving you time and money.

All GTconsult intranets and landing pages are intuitive and consistent, they are designed with the end user in mind. Each template is tailored to meet your company's needs and corporate identity.

➤ **Business Automation.**

Our A Team has been automating business processes for years and has helped a multitude of businesses grow, scale and become more profitable.

➤ **Info Mailers.**

Introducing Info Mailers, leveraging your existing SharePoint datastore to send you (and your business) daily information right to your mailbox to be accessed via PC, mobile, tablet and phablet.

➤ **SharePoint Workbench.**

GTconsult is redefining the way you use SharePoint with software as an application. Our responsive, high-performance workbenches are a platform through which you can access and manage queues of information.

➤ **DEVELOPMENT**

➤ **Attend.**

An event management solution, built in SharePoint, that allows you to create events for your organization and have employees sign up and attend.

➤ **Digital Forms.**

Modernize your paper based forms by digitizing them on SharePoint and transform them with a workflow process. No more paper!

➤ **Agility.**

Agility enables you to create, manage and close projects via SharePoint. Resources can be assigned to project tasks to provide the project manager with real-time overview of their projects.

➤ **Aspire.**

Aspire is a personal improvement solution in SharePoint that helps employees and managers track performance and goals throughout the year by utilising KPA's. It empowers managers to provide accurate feedback during the employee's performance review of their past twelve months.



➤ **Leave Management.**

Request and manage leave from SharePoint for all of your employees in one place.

➤ **Joiners and Leavers.**

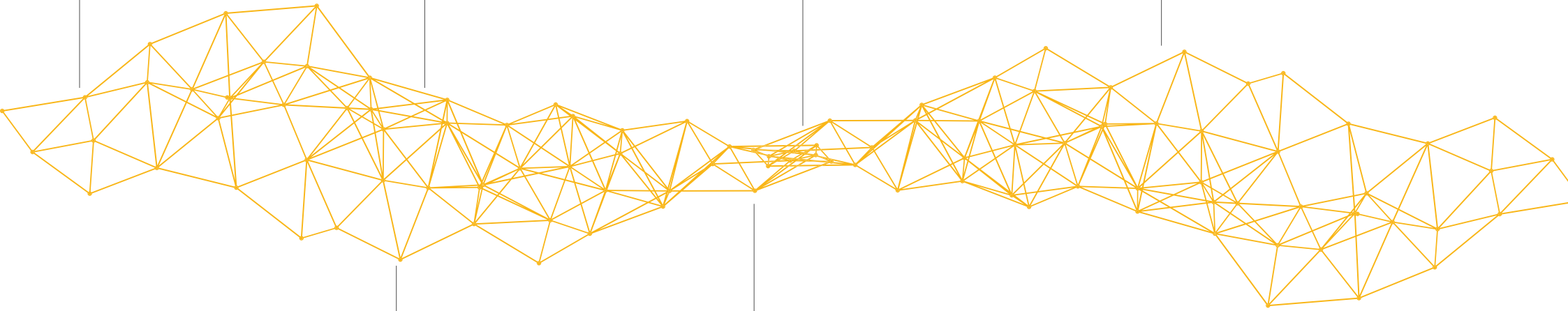
Simplifying the complex and often tedious onboarding and offboarding process for employees by assigning tasks to relevant employees to ensure that the new starter has all that they need on their first day of employment.

➤ **IT Asset Management.**

Maintain control of the assets within your organization to understand who is assigned what and managing the life cycle of those devices.

➤ **Travel Request Solution.**

Facilitate arrangements for travel requests which includes flights, accommodation and car hire.



➤ **Expense Claim.**

Speed up the expense claim process by allowing employees to claim for expenses through an approval workflow on SharePoint.

➤ **Capital Expenditure.**

Request for CapEx through SharePoint that can go through multiple levels of approval before it is approved.



 gtconsult.com/support

Support

Migrations, helpdesk & support, configuration and roll out of Microsoft SharePoint, Microsoft Office 365 and Microsoft Azure.

Remotely located.

The A Team Support team is located remotely around the world and specializes in the SharePoint, Office 365 and Azure platforms.

Up-to-date support.

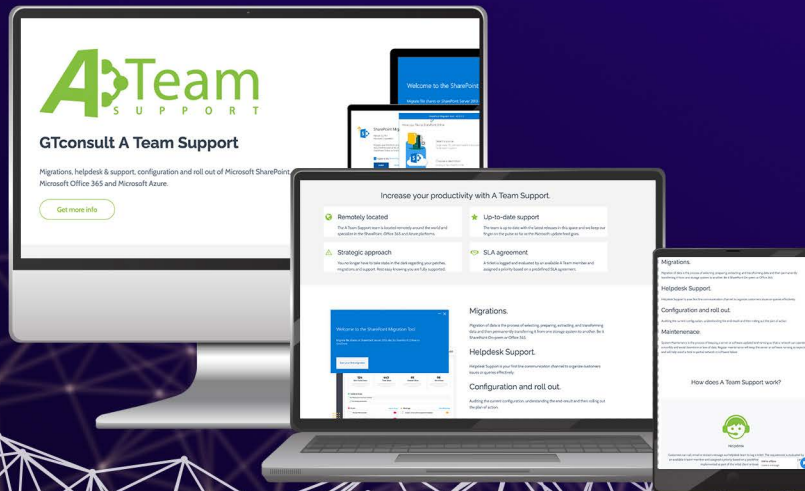
The team is up to date with the latest releases in this space and we keep our finger on the pulse as far as the Microsoft update feed goes.

Strategic approach.

You no longer have to take stabs in the dark regarding your patches, migrations and support. Rest easy knowing you are fully supported.

SLA agreement.

A ticket is logged and evaluated by an available A Team member and assigned a priority based on a predefined SLA agreement.



➤ **Migrations.**

Migration of data is the process of selecting, preparing, extracting, and transforming data and then permanently transferring it from one storage system to another. Be it SharePoint On-prem or Office 365.

➤ **Helpdesk & Support.**

Helpdesk Support is your first line communication channel to organize customer issues or queries effectively.

➤ **Maintenance.**

System Maintenance is the process of keeping a server or software updated and running so that a network can operate smoothly and avoid downtime or loss of data. Regular maintenance will keep the server or software running as expected and will help avoid a total or partial network or software failure.

➤ **Configuration and roll out.**

Auditing the current configuration, understanding the end-result and then rolling out the plan of action.

➤ **SUPPORT**

➤ **Upgrades.**

Ensure your SharePoint is up-to-date by upgrading to a new version with our expert assistance.

➤ **Audits.**

An event management solution, built in SharePoint, that allows you to create events for your organization and have employees sign up and attend.

➤ **New Installations.**

Modernize your paper based forms by digitizing them on SharePoint and transform them with a workflow process. No more paper!

A Team PROTECTION

 gtconsult.com/protection

Protection

Red Team.

We hack you before you get hacked. Hire a hacker and receive a real-world attack scenario without the devastating consequences. Mitigate your risk with the cover of A Team Protection.

Real-world attacks.

Receive a real-world attack without the consequences. Our RED TEAM will craft a custom-designed attack based on your network.

Be proactive.

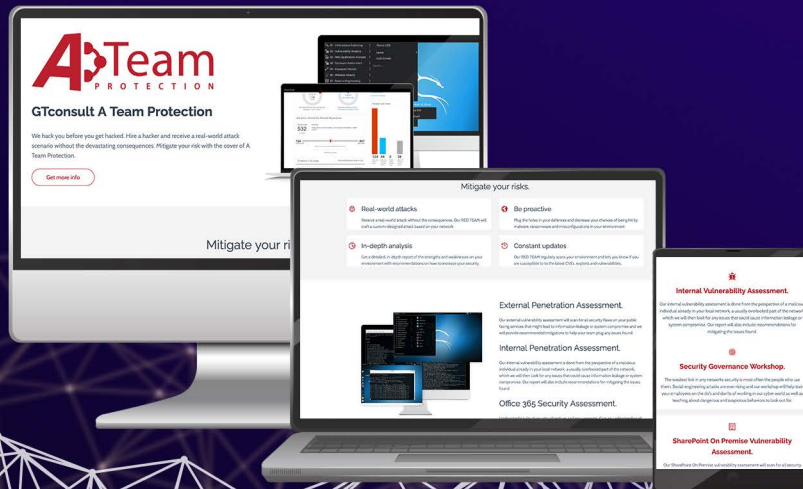
Plug the holes in your defences and decrease your chances of being hit by malware, ransomware and misconfigurations in your environment

In-depth analysis.

Get a detailed, in-depth report of the strengths and weaknesses on your environment with recommendations on how to increase your security.

Constant updates.

Our RED TEAM regularly scans your environment and lets you know if you are susceptible to the latest CVEs, exploits and vulnerabilities.



➤ **External Vulnerability Assessment.**

Our external vulnerability assessment will scan for all security flaws on your public facing services that might lead to information leakage or system compromise and we will provide recommended mitigations to help your team plug any issues found.

➤ **Internal Vulnerability Assessment.**

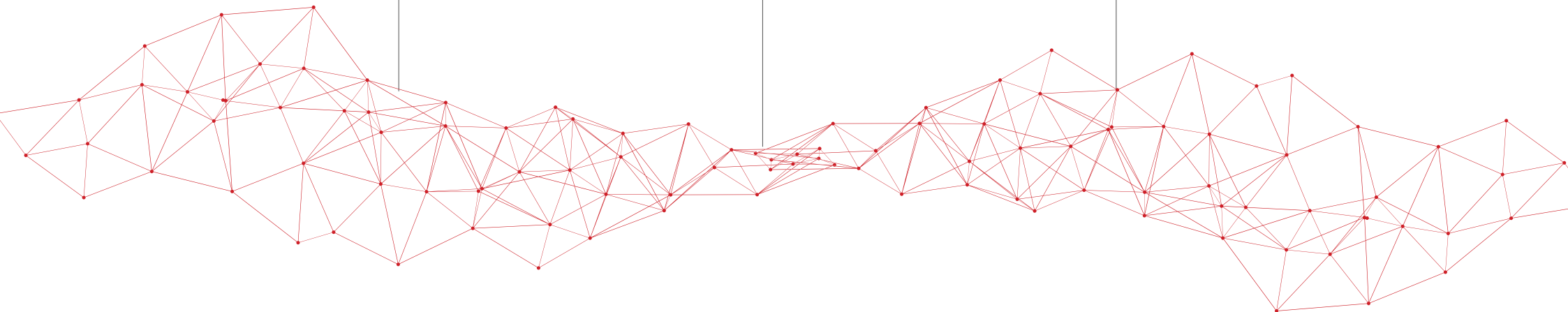
Our internal vulnerability assessment is done from the perspective of a malicious individual already in your local network, an often overlooked part of the network, which we will then look for any issues that could cause information leakage or system compromise. Our report will also include recommendations for mitigating the issues found.

➤ **Penetration testing.**

Penetration testing assignments expand upon a vulnerability assessment and perform actual real world penetration attacks in a safe and controlled manner to test your networks on the front lines and provide a more accurate understanding of where the holes are that could lead to information leakage and system compromise.

➤ **Office 365 Security Assessment.**

Understanding cloud security objectives and requirements. Gain an understanding of the customers business requirements and how they drive security objectives and requirements. We also provide guidance, recommendations and best practices on how to successfully implement Office 365 security features and provide a prioritized and actionable Office 365 security road map based on customer security objectives and requirements.



A3Team PROTECTION

➤ Long-term Security Strategies.

We will provide you with long-term security strategies to strengthen and secure your environment. We will provide you with in-depth recommendations, best practices, fixes and tips to assist you in securing your systems.

➤ MFA Configuration.

MFA is a must have in the modern cyber landscape. With the amount of data breaches and the speed at which brute-force attacks can happen, a single password is no longer a secure option for authentication. Once enabled, Multi-factor authentication will become a second layer of security, requesting an OTP which is sent directly to the legitimate user attempting to log in. It is highly recommended to have this enabled.

➤ Mobile Device Management.

Every modern workplace usually allows for certain company assets like email or intranets to be accessed by user's personal mobile devices. Unmanaged this can be a major risk as these devices are uncontrolled and could be open to external viruses or hackers. MDM allows for company data to be securely controlled and encrypted on user's personal devices, vastly reducing the risk of data leakage.

➤ Microsoft Intune Configuration and Roll Out.

Microsoft Intune combines MFA and MDM functionality and applies your company's rules and policies to all devices according to predefined policies making their management easy and helping admins keep track of all devices.

We will take you through all 9 steps for configuring and rolling out Intune to your organization from determining goals and requirements, uncovering challenges, developing rollout communication plans and all the way to testing and making sure your Intune is protecting your business the way you need it to.

Goodbye never ending projects.

We have phased out projects and have taken a new approach so that we can understand your needs better. Our **A Team Agreements** are aimed at providing you with a complete solution to answer all your needs.

Agreements

Vs.

Projects

Agreements can lead to ongoing support or extra development for the business.



Projects that require support after delivery may be rejected by business due to CAPEX restraints.

OPEX model is more attractive and can be used when there are budget constraints when requesting CAPEX.



Raising CAPEX for a project may take months. If anything changes, the process is halted.

Agile development process which means changes to the project can be accommodated without much fan fair.



Change control process requiring a request for the raising of additional CAPEX.

Full access to A Team Development, Support and Protection teams.



Access to specific team members only.

A Team Agreements.

www.gtconsult.com/ateam-agreements
sales@gtconsult.com
087-655.5555

= Benefits

- ✓ Assigned dedicated team.
- ✓ Experienced industry leaders.
- ✓ Project flexibility.
- ✓ Long term relationship.
- ✓ OPEX cost fixed.
- ✓ Indepth roadmaps.
- ✓ One-on-one Bluesky events.
- ✓ On-going support.

Contact Us



Seattle

2205 152nd Ave NE
Redmond, WA 98052
Washington State
USA



United Kingdom

Venture House
2 Arlington Square
Downshire Way
Bracknell
Berkshire
RG12 1WA
United Kingdom



Cape Town

Springfield Office Park
Upper Floor
Freshgold Building
109 Jip De Jager Drive
Bellville,
Cape Town, 7530



Durban

Unit B3
Meyrickton Park
2 Meyrickton Place
Hillcrest
South Africa, 3610

Africa: +27 87-655.5555

UK: +44 203-965.4369

USA: + 1 877-894.5594

hello@gtconsult.com

www.gtconsult.com